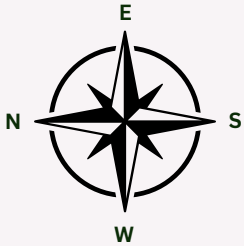
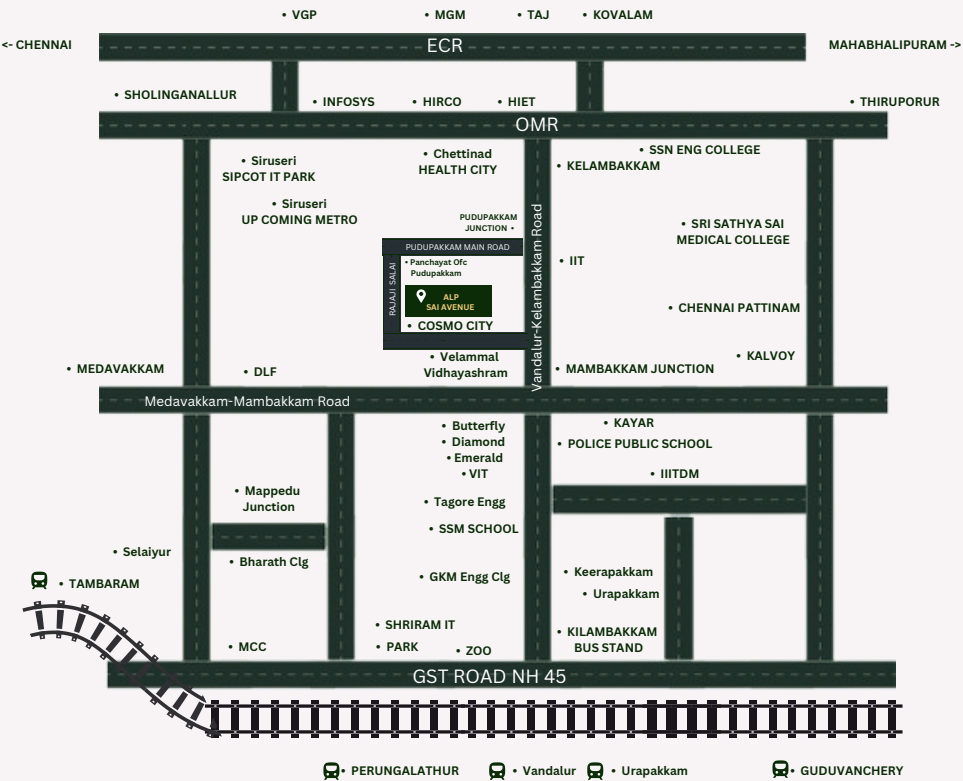


" LOCATION MAP "



Site Location



Our Preferred Bankers,



For Booking & Enquiries

Office: Perumbakkam, Chennai-600100



ALP SAI AVENUE

"PUDUPAKKAM-OMR"





ALP -" SAI AVENUE "

Looking for a sweet escape within the city..?
Introducing ALP PROPERTY MAKERS "SAI AVENUE"

Home is the abode that defines you, your accomplishments, your family, and your personal space. Not overnight, not a month, not even a year but from the day those little hands stacked up blocks & built sand castles was the dream dreamt. [The look, the feel of your home is drawn by your imagination] can be omitted if the content is extra for this heading. Your work, your dedication make it possible to realize this dream. A property is a life-time security that you can't be robbed off. Its time you claimed your reward and call it MINE.

"LOCATION ADVANTAGES"

"Educational Institute"

- Velammal Vidyashram School
- Vellore Institute of Technology (VIT)
- St.John"s International Residential School
- Olive International School
- Pudupakkam Government School

"Healthcare"

- Government Hospital
- Chettinad Hospital And Research Institute
- Chettinad Dental College and Research

"CLOSE DISTANCE TO SIGNIFICANT LOCATIONS"

- SIPCOT IT Park-2 Mins
- OMR Food Court -3 Mins
- Chettinadu Super Speciality Hospital - 5min
- Hindustan Institute of Technology - 10Min
- "Entertainment"
- Marina Mall - 15 Mins
- Vandalur Zoo - 20 Mins
- Kilambakkam Bus Terminus - 25 Mins

"PROJECT HIGHLIGHTS"



POTABLE
WATER



BLACK-TOP
ROADS



GATED
COMMUNITY



ELECTRICITY
SUPPLY



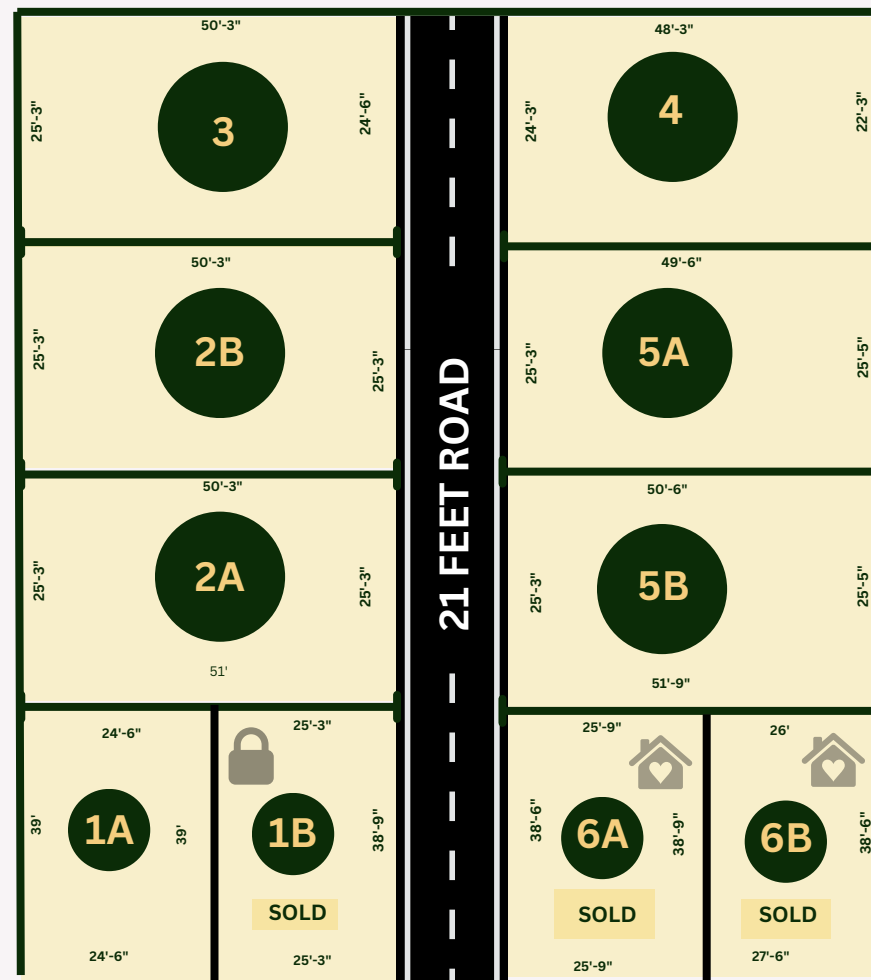
FULLY
COMPOUNDED

PLAN SHOWING IN THE LAYOUT OF SURVEY NO:58/3B OF
PUDUPAKKAM VILLAGE & PANCHAYATH, THIRUPORRUR PANCHAYATH
UNION, VANDALUR TALUK, CHENGALPATTU DISTRICT

PLOT NO	AREA
1A	980 Sq.ft
1B	982 Sq.ft
2A	1278 Sq.ft
2B	1269 Sq.ft
3	1250 Sq.ft



PLOT NO	AREA
4	1136 Sq.ft
5A	1269 Sq.ft
5B	1297 Sq.ft
6A	995 Sq.ft
6B	1033 Sq.ft



... RAJAJI SALAI ...